



ARCHBOLD AUGUST 2020 NEWS

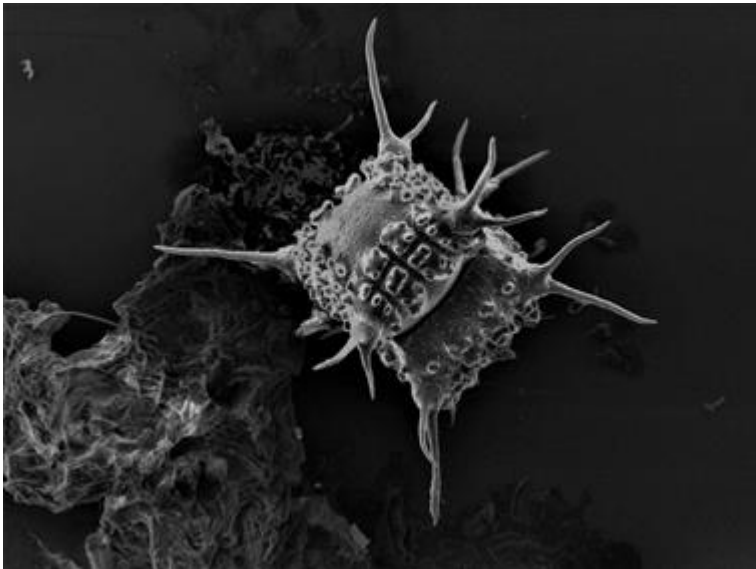
for curious minds



In This Issue:

1. Art Below Lake Annie
2. Live from the Field
3. Archbold's Heart & Soul
4. Backyard Science
5. Here's to Hilary

Art Below Lake Annie



Lake Annie alga, *Staurastrum nova-caesareae*. Photo by Kristy Sullivan.

Visiting Lake Annie researcher Kristy Sullivan got international attention for her out-of-this-world photograph of the algae *Staurastrum nova-caesareae*. Under the tutelage of Dr. Evelyn Gaiser at Florida



[Donate Now](#)

[Archbold Biological
Station Website](#)

International University, **Sullivan is studying long-term trends of phytoplankton assembly in Lake Annie.** Sullivan shared, "**Phytoplankton in the lake are very sensitive to weather and climate patterns.** The lake is fed 80-90% by groundwater, and periods of intense precipitation create runoff containing lots of humic matter, turning the water brown. During these periods, we find a different phytoplankton community than during times when the lake is clear." Between 2009 and 2013, the lake was in a clear water phase, and the specimen in this photo was a dominant species in the algal community. The lake entered a dark phase in 2013, and this species has not been seen since. In the uncertain future of climate change, the weather may continue to be rainy and wetter, causing the dark phase to persist. Sullivan collected this noteworthy specimen during Lake Annie's clear phase and used a scanning electron microscope to create an almost three-dimensional image. Her photo was a finalist for the 2020 Canter-Lund Award established by the British Phycological Society. View all the award finalists [here](#).

Live from the Field



Dr. Eric Menges in Florida rosemary scrub at Archbold.

Dr. Claudia Luke (Sonoma State University), Dr. Kari O'Connell (Oregon State University), and Dr. Hilary Swain, Archbold Director, just received a National Science Foundation award, The Virtual Field, to enhance online training by field stations. One component is a 'real-time with researchers' experience for college students and faculty. **The inaugural Live from the Field event was 'Fire Research across the Continent'**. It featured research on 'Fire Effects in Florida Scrublands' from Dr. Eric Menges, Archbold Plant Ecology Director. The other fire

[Subscribe to our Monthly News](#)

[Archbold Press](#)

"Archbold Biological Station is one of America's iconic centers of continuous research and education in field biology. It is a prototype of what we need all across America."

— Edward O. Wilson

Online Events

August 13: 3:30 PM

'Migratory Insects: Connecting the US South and the Canadian Prairies'

Dr. James Tansey,
Canadian Ministry of
Agriculture

[Register here](#)

Past Events

Watch 'Endemic plants of the Lake Wales Ridge' by Scott Ward [here](#)

Watch 'Inspired by Nature: Using Wild Populations to Inform Rare Species Translocations and Evaluate Success' by Stephanie Koontz [here](#)

ecologists were Michelle Halbur from Pepperwood Preserve, California, and Dr. Amy Whipple and Dr. Kristen Waring from Northern Arizona University. Each field station showed an 8-minute video highlighting the research, followed by all the scientists on a panel addressing questions from college students and the public. The answers allowed viewers to compare and contrast ecological patterns and processes across locations, a skill that is fundamental to enhancing understanding. According to Swain, "Although nothing will replace the reality of being in the field, this series offers new possibilities, like you are on a field trip in Nature, with three professors, in three different places, at the same time. Challenges open new opportunities: The Virtual Field will allow Archbold to reach a wider international audience."

Archbold's Heart & Soul



Verna Dunbar at Archbold.

Archbold Biological Station celebrates thirty years with Verna Dunbar, our friend and colleague, whose dedication makes our life at the Station better in every way. For each and every visitor,

researcher, intern, and staff member, Verna creates warm hospitality and a welcoming experience. Verna's delightful personality connected with staff and hundreds of Archbold interns. Many have recognized their appreciation of her kindness and goodwill by sending wedding and baby pictures to Verna over the years. We all have a story about Verna. One of those is a story told by former intern and friend of Archbold, Zach Forsburg. Verna and Judy Maynard pounded on Zach's

Watch Intern Seminar by
Caroline
Wade [here](#) and Elena
Prado-Ragan [here](#)

Watch 'Artificial Light at
Night Affects the Physiology
and Growth of Amphibians'
by Dr. Zachery
Forsburg [here](#)

Watch all past virtual
events [here](#).



Check out our Youtube
Videos!



Connect with us on
Instagram!



Connect with us on
Facebook!

door at Rosemary Cottage at 5 AM. They wanted the aspiring herpetologist to help remove a snake from the kitchen. Turns out Verna chose the right scientist to help out. Forsburg correctly identified the snake as harmless. The snake was plastic. The laughter was real. In 2009, she joined researchers on Red Hill to watch them measure, weigh, and radio-collar a Florida Black Bear. Some of her fondest memories are her Buggy Tour of Buck Island Ranch, Archbold's 50th anniversary celebration in 1991, and the many joyful holiday parties over the years. Thank you Verna for being part of Archbold since 1990. **Archbold is famous around the world for not only good science, but for good people, like Verna.** Verna shared, "I love my job at Archbold. I meet people of all nationalities that study the environment. They make you feel happy and like they are family. I do appreciate being part of the Archbold gang for 30 years."

Backyard Science



Archbold Ecology Summer Campers compare their hand size to a mammal track last year.

Quarantines, closed summer camps and activities, canceled travel plans, social distancing...parents are all too familiar with the struggle to maintain some normalcy this summer. With children out of school, many are probably a bit stir-crazy. Parents might be wondering what to do with these kids all day. Or maybe you need some activities for yourself. In June, Archbold Biological Station's Virtual Ecology Summer Camp focused on campers doing at-home science projects that use household supplies. **Now that all the camp sessions are over, Archbold has made the camp website open to the public.** Click [here](#). You can now enjoy the same fun backyard science projects at your own pace. The website includes simple directions, tutorial videos, photos of campers in action, and educational nature videos made by teen camp



Connect with us on Twitter!

[Archbold Facebook Event Calendar](#)

The Scrub Blog
Nature and Science from Florida's
Heartland

Explore [The Scrub Blog](#) by Archbold creative staff.

volunteers. Archbold's Director of Education, Dustin Angell, shared, "**Becoming better acquainted with the weather, wildlife, and habitats in your neighborhood is an enjoyable pursuit for families and individuals that benefits their health and wellbeing.** Have fun with these projects and customize them to your needs and interests." Spending more time at home is essential this summer, but not all of that time must be spent inside.

Here's to Hilary



Archbold Executive Director Dr. Hilary Swain.

July 30, 2020 marked Dr. Hilary Swain's 25th anniversary as the Executive Director of Archbold. Given this momentous milestone, Board members, supporters, staff, colleagues, and family from across Europe surprised Hilary with a [Zoom celebration](#). Board Member, Schellie Archbold, raised a toast, "To Hilary, someone extraordinary and beloved to us all." Dr. Mark Deyrup, Emeritus Research Biologist, recalls in her application, "I value among my accomplishments the number of acres of habitat protected as much as the number of scientific papers published." True to her word, Hilary has worked with others to increase Archbold's footprint from 5,000 to 20,000 acres and helped to establish 53,000 acres of surrounding conservation lands, with more targeted. Says Hilary, "Connected conservation lands are important for the protection of rare species and the long-term integrity of Archbold." Meanwhile Archbold has published >1,300 scientific papers, was awarded 353 grants and hosted 383 college classes. Supporter Pam Heilman added, "The work you do is extraordinary – we are committed to being a part of this, and continuing what has been this very special relationship



Directions to Archbold Biological Station

Eight miles south of Lake Placid. Entrance is 1.8 miles south of SR 70 on Old SR 8.

between the Island of Boca Grande on the West Coast, and this 'island' in Central Florida. It is such a privilege to be working with you." Taken entirely by surprise, Hilary was touched, stating, "Working at Archbold has been a privilege. It has lifted me much more than I've ever lifted Archbold." **We salute you, Hilary Swain. Your passion and devotion to Archbold, science, conservation, and education has inspired everyone.** Watch the 'Hilary Surprise Anniversary' video created by Dustin Angell [here](#).

If you enjoy these stories from Archbold, please consider a gift to support our research and education programs. [Donate now](#). Your gift really makes a difference.

[Archbold Biological Station](#) | [Buck Island Ranch](#) | [Archbold Reserve](#)

[Contact Us](#) | [Directions](#) | [Newsroom](#) | [Donate](#)

We are a publicly supported organization exempt from income taxes under the Internal Revenue Code Section 501(c)(3).

[Privacy Policy](#) | [Unsubscribe](#)

[Archbold](#)
123 Main Drive, Venus, FL 33960