

## The Central Florida Regional Planning Council (CFRPC) Planning and Development Data Project

### What is the Central Florida Regional Planning Council (CFRPC) Planning and Development Data Pilot Project?

Using maps of vacant parcels, county land use plans, zoning, and recent building permit locations, **this project by CFRPC for Archbold Biological Station identifies Florida Wildlife Corridor opportunity areas statewide that are most at-risk of near-term development (map below).** These could be focus areas for land trusts, environmental agencies, or private citizens working to ensure a sustainable future for both wildlife and growing Heartland communities. The methods used may be more appropriate for identify future development in peri-urban areas.

**The Heartland Counties (Hardee, Highlands, DeSoto, Glades, Hendry, Okeechobee, and Polk) were completed in early 2023 with the remained of the state data coming online through the year. A key Heartland result is that only about 15% of all lands targeted for development** (urban land suitability or residential future land use) **are within the Corridor.** Therefore, if carefully planned, development can progress without excessive impacts to the Corridor and the wildlife and rural economies it supports.

### How should the CFRPC Findings be used?

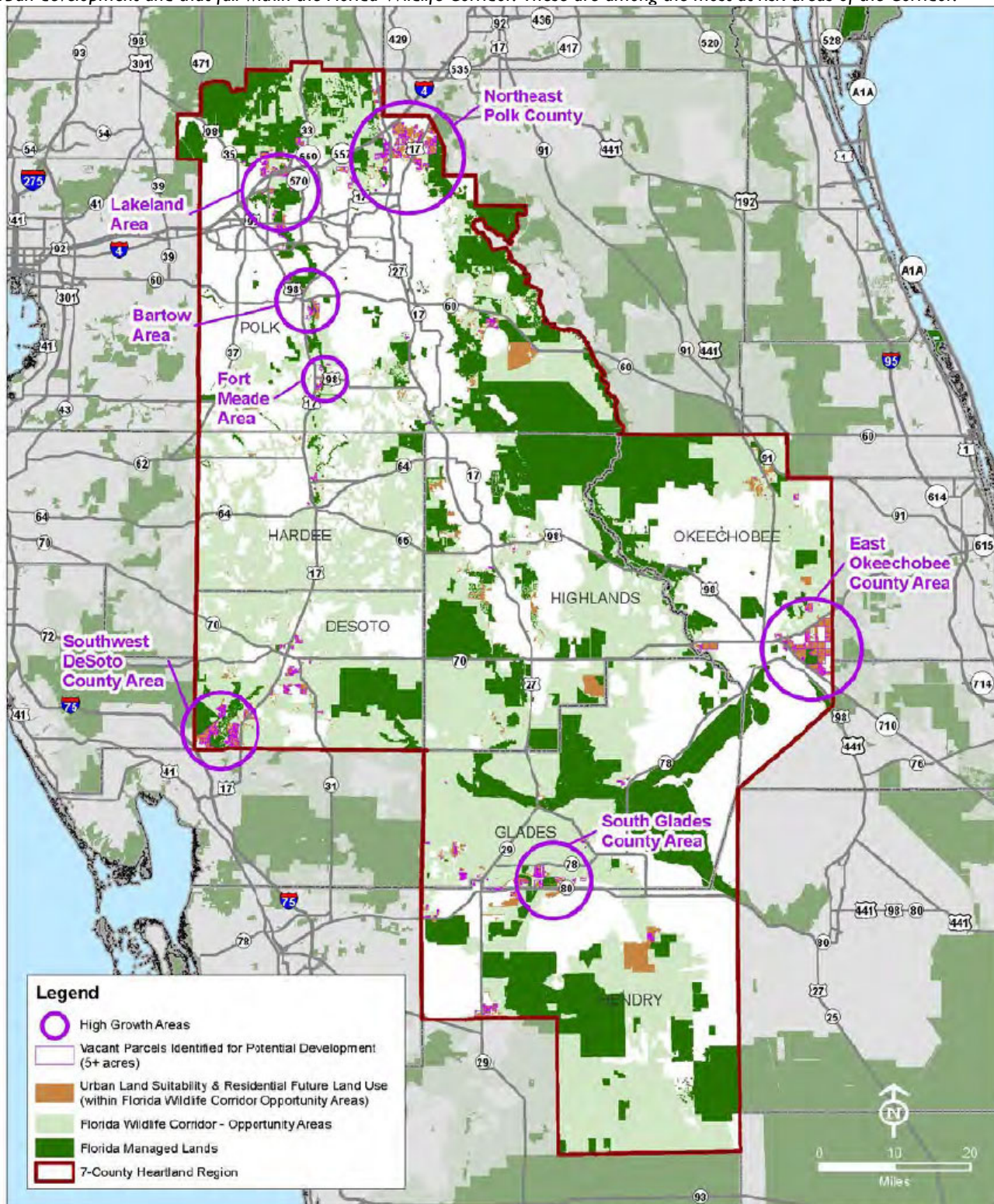
Local governments, land trusts, landowners, and developers can use the full Corridor map to identify areas where development might have an outsize impact on wildlife, especially near in peri-urban areas. **The CFRPC map below and those in the full report highlight Corridor areas that may need the most urgent attention, based on future development timelines.**

Detailed methods and additional maps are in the full CFRPC reports available on Archbold's website.

### Contacts for this product:

CFRPC and Archbold are prepared to help interpret the report and put it into action. See <https://www.cfrpc.org> or contact Archbold's Director of Conservation, Joshua Daskin, at [jdaskin@archbold-station.org](mailto:jdaskin@archbold-station.org).

Purple circles indicate areas of Heartland Florida with clustering of relatively large (5+ acre) vacant parcels that are identified as suitable for urban development and that fall within the Florida Wildlife Corridor. These are among the most at-risk areas of the Corridor.



#### **The Central FL Regional Planning Council**

The Central Florida Regional Planning Council provides support to the citizens and counties of Heartland Florida to seek ways to improve citizens' quality of life.



#### **Archbold Biological Station**

Archbold is a not-for-profit scientific research center in Highlands County, FL focused on the ecology and conservation of rare species and habitats, large landscapes and wildlife corridors, and the economic and ecological sustainability of agriculture and ecosystems. Archbold is the lead convener of science for the campaign to conserve the Florida Wildlife Corridor.